

Category

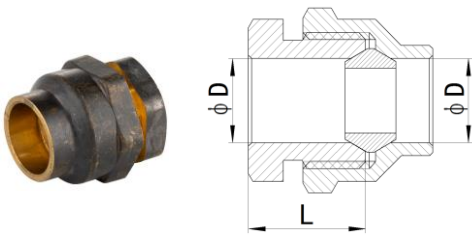
- HS310 Brass Flare Fitting
- HS320 Brass Compression Fitting
- HS330 Brass Threaded Fitting
- HS340 Brass Capillary Solder Fitting

Features

- Both CW602N and CW511L material
- WATERMARK approval

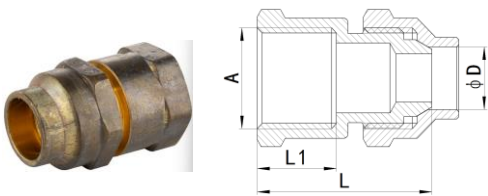
HS310 Brass Flare Fitting

HS310-001 COMP UNION FLARED



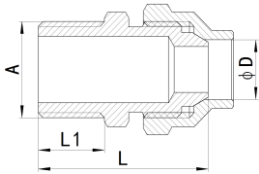
SIZE	D	L
15Cx15C	13	18.5
20Cx20C	19.2	19.5
25Cx25C	25.5	23
32Cx32C	31.9	27.5
40Cx40C	38.3	31
50Cx50C	51	31

HS310-002 COMP UNION FLARED FEMALE



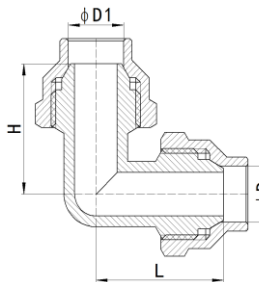
SIZE	D	A	L	L1
15Cx15FI	13	Rp1/2	37.5	17
15Cx20FI	13	Rp3/4	39.5	18.5
20Cx20FI	19.2	Rp3/4	39.5	18.5
25Cx25FI	25.5	Rp1	46	21
32Cx32FI	31.9	Rp1 1/4	52	24
40Cx40FI	38.3	Rp1 1/2	55	24
50Cx50FI	51	Rp2	60.5	28

HS310-003 COMP UNION FLARED MALE



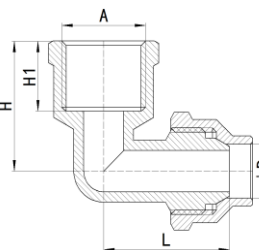
SIZE	D	A	L	L1
15Cx6MI	13	R1/2	34.5	11
15Cx15MI	13	R3/4	38.5	15
20Cx20MI	19.2	R3/4	41	16.5
25Cx25MI	25.5	R1	47.5	19
32Cx32MI	31.9	R1 1/4	55	21.5
40Cx40MI	38.3	R1 1/2	58	21.5
50Cx50MI	51	R2	64.5	26

HS310-004 COMP ELBOW FLARED



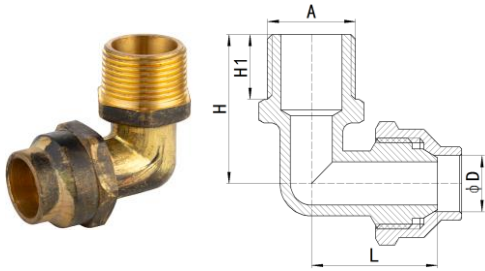
SIZE	D	D1	L	H
15Cx15C	13	30	30	30
20Cx15C	19.2	13	30.5	33
20Cx20C	19.2	34.5	34.5	34.5
25Cx25C	25.5	43	43	43
32Cx32C	31.9	50.5	50.5	50.5
40Cx40C	38.3	56.5	56.5	56.5
50Cx50C	51	66	66	66

HS310-005 COMP ELBOW FLARED FEMALE



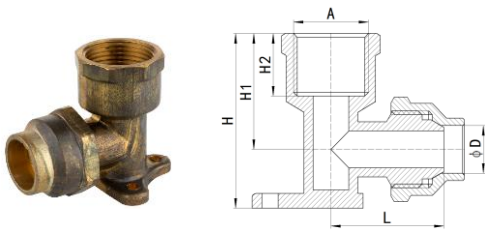
SIZE	D	L	A	H	H1
15Cx15FI	13	31.5	Rp1/2	31.5	17
20Cx20FI	19.2	34.5	Rp3/4	35	18.5
25Cx25FI	25.5	43	Rp1	42.5	21
32Cx32FI	31.9	50.5	Rp1 1/4	50.5	24
40Cx40FI	38.3	56.5	Rp1 1/2	54.5	24
50Cx50FI	51	66	Rp2	65	28

HS310-006 COMP ELBOW FLARED MALE



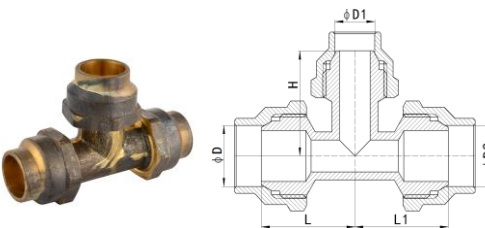
SIZE	D	L	A	H	H1
15C×15MI	13	30	R1/2	34.5	15
15C×20MI	13	33	R3/4	37	16.5
20C×20MI	19.2	34.5	R3/4	39.5	16.5
25C×25MI	25.5	42	R1	46	19
32C×32MI	31.9	50.5	R1 1/4	55.5	21.5
40C×40MI	38.3	54.5	R1 1/2	59.5	21.5
50C×50MI	51	64	R2	71	26

HS310-007 COMP WALLPLATE ELBOW FLARED FEMALE



SIZE	D	L	A	H	H1	H2
15C×15FI	13	31.5	Rp1/2	47.5	31.5	17
20C×15FI	19.2	32	Rp1/2	52.5	33.5	17
20C×20FI	19.2	34.5	Rp3/4	54	35	18.5

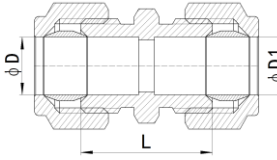
HS310-008 COMP TEE FLARED



SIZE	D	D1	D2	L	L1	H
15C×15C×15C	13	13	13	30	30	30
20C×20C×20C	19.2	19.2	19.2	34.5	34.5	34.5
25C×25C×25C	25.5	25.5	25.5	43	43	43
32C×32C×32C	31.9	31.9	31.9	50.5	50.5	50.5
40C×40C×40C	38.3	38.3	38.3	56.5	56.5	56.5
50C×50C×50C	51	51	51	66	66	66
20C×20C×15C	19.2	19.2	13	34.5	33	34.5
20C×15C×15C	19.2	13	13	30.5	30	33
20C×15C×20C	19.2	13	19.2	30.5	30.5	33

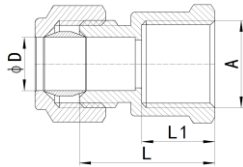
HS320 Brass Compression Fitting

HS320-001 COMPRESSION UNION



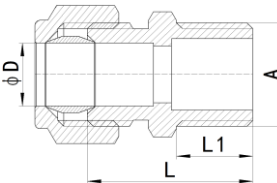
SIZE	D	D1	L
15C×15C	12.8	12.8	29.5
20C×20C	19.1	19.1	34.5
20C×15C	19.1	12.8	32.5

HS320-002 COMPRESSION UNION FEMALE



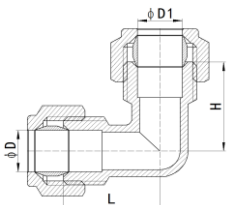
SIZE	D	A	L	L1
15C×15FI	12.8	Rp1/2	31.5	17
15C×20FI	12.8	Rp3/4	33	18.5
20C×20FI	19.1	Rp3/4	35	18.5

HS320-003 COMPRESSION UNION MALE



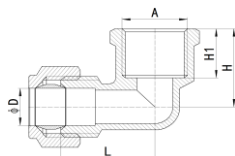
SIZE	D	A	L	L1
15C×15MI	12.8	R1/2	32.5	15
15C×20MI	12.8	R3/4	35	16.5
20C×15MI	19.1	R1/2	35.5	15
20C×20MI	19.1	R3/4	37	16.5

HS320-004 COMPRESSION ELBOW



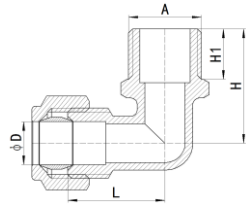
SIZE	D	D1	L	H
15C×15C	12.8	12.8	27.5	27.5
20C×15C	19.1	12.8	28.5	29.5
20C×20C	19.1	19.1	31.5	31.5

HS320-005 COMPRESSION ELBOW FEMALE



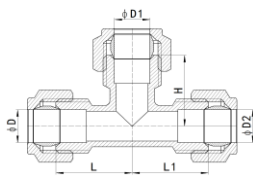
SIZE	D	L	A	H	H1
15C×15FI	12.8	30	Rp1/2	27	17
20C×20FI	19.1	34	Rp3/4	31	18.5

HS320-006 COMPRESSION ELBOW MALE



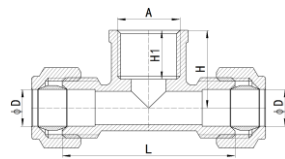
SIZE	D	L	A	H	H1
15C×15MI	12.8	38	R1/2	34	15
15C×20MI	12.8	31	R3/4	36.5	16.5
20C×20MI	19.1	32.5	R3/4	38.5	16.5

HS320-007 COMPRESSION TEE



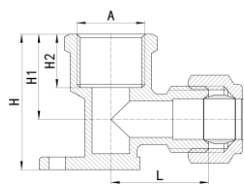
SIZE	D	D1	D2	L	L1	H
15C×15C×15C	12.8	12.8	12.8	27.5	27.5	27.5
20C×20C×20C	19.1	19.1	19.1	31.5	31.5	31.5
20C×15C×20C	19.1	12.8	19.1	28.5	28.5	30
20C×20C×15C	19.1	19.1	12.8	31.5	29.5	31.5

HS320-008 COMPRESSION TEE FEMALE



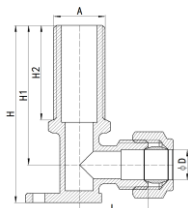
SIZE	D	L	A	H	H1
15C×15FI×15C	12.8	58	Rp1/2	27	17
20C×20FI×20C	19.1	68	Rp3/4	31	18.5

HS320-009 COMPRESSION WALLPLATE ELBOW FEMALE



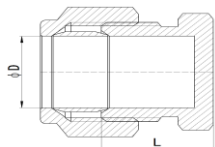
SIZE	D	L	A	H	H1	H2
15C×15FI	12.8	30	Rp1/2	43	27	17
20C×20FI	19.1	34	Rp3/4	50	31	18.5

HS320-010 COMPRESSION WALLPLATE ELBOW



SIZE	D	L	A	H	H1	H2
15C×15MI	12.8	28	G1/2	75	59	40

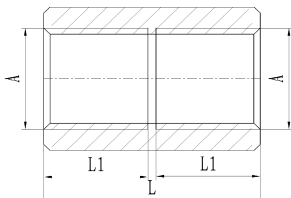
HS320-011 COMPRESSION STOP END



SIZE	D	L
15C	12.8	17.5
20C	19.1	20.5

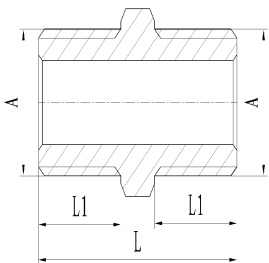
HS330 Brass Threaded Fitting

HS330-001 BRASS HEX SOCKET



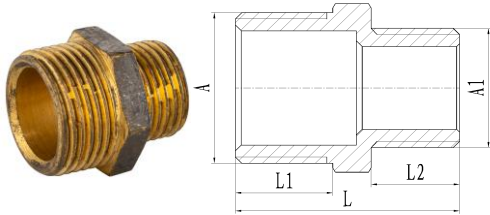
SIZE	A	L	L1
8x8	Rp1/4	27	13
10x10	Rp3/8	28	13.5
15x15	Rp1/2	36	17.5
20x20	Rp3/4	38	18.5
25x25	Rp1	45	22
32x32	Rp1 1/4	51	24.5
40x40	Rp1 1/2	51	24.5
50x50	Rp2	59	28.5

HS330-002 BRASS HEX NIPPLE



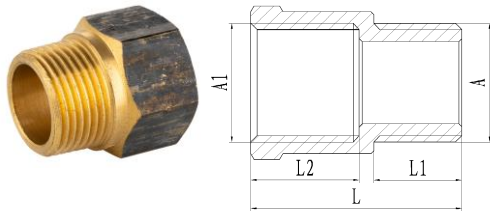
SIZE	A	L	L1
6x6	R1/8	19.5	7.5
8x8	R1/4	26.5	11
10x10	R3/8	28.5	11.5
15x15	R1/2	35.5	15
20x20	R3/4	39.5	16.5
25x25	R1	44.5	19
32x32	R1 1/4	51.5	21.5
40x40	R1 1/2	52.5	21.5
50x50	R2	61.5	26

HS330-003 BRASS HEX REDUCING NIPPLE



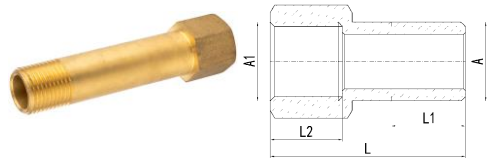
SIZE	A	A1	L	L1	L2
15x6	R1/2	R1/8	28	15	7.5
20x10	R3/4	R3/8	34.5	16.5	11.5
20x15	R3/4	R1/2	38	16.5	15
25x15	R1	R1/2	40.5	19	15
32x20	R1 1/4	R3/4	46.5	21.5	16.5
40x25	R1 1/2	R1	50	21.5	19
50x25	R2	R1	54.5	26	19

HS330-004 BRASS HEX SOCKET M&F



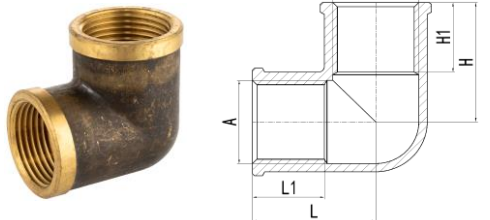
SIZE	A	A1	L	L1	L2
15x15	R1/2	Rp1/2	35	15	17.5
15x20	R1/2	Rp3/4	36	15	18.5
20x20	R3/4	Rp3/4	37.5	16.5	18.5
25x25	R1	Rp1	44	19	22

HS330-005 BRASS EXTENSION M&F



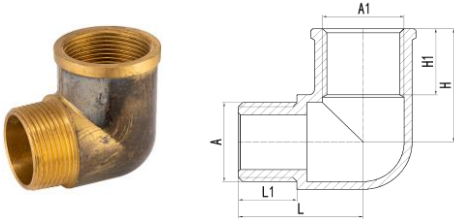
SIZE	A	A1	L	L1	L2
15x50mm	R1/2	Rp1/2	50	15	18.5
15x100mm	R1/2	Rp1/2	100	15	18.5
15x150mm	R1/2	Rp1/2	150	15	18.5

HS330-006 BRASS ELBOW F&F



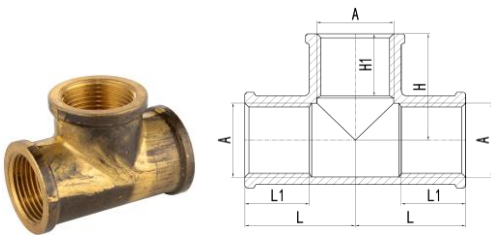
SIZE	A	L	L1	H	H1
6x6	Rp1/8	16	9	16	9
8x8	Rp1/4	21	13	21	13
10x10	Rp3/8	23.5	13.5	23.5	13.5
15x15	Rp1/2	30	17.5	30	17.5
20x20	Rp3/4	33.5	18.5	33.5	18.5
25x25	Rp1	40.5	22	40.5	22
32x32	Rp1 1/4	47.5	24.5	47.5	24.5
40x40	Rp1 1/2	51	24.5	51	24.5
50x50	Rp2	61	28.5	61	28.5

HS330-007 BRASS ELBOW M&F



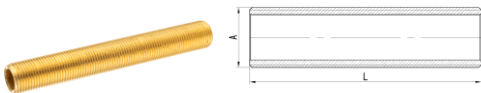
SIZE	A	A1	L	L1	H	H1
6x6	R1/8	Rp1/8	17.5	7.5	13.5	9
8x8	R1/4	Rp1/4	23	11	19	13
10x10	R3/8	Rp3/8	25.5	11.5	21.5	13.5
15x15	R1/2	Rp1/2	32	15	30	17.5
20x20	R3/4	Rp3/4	35	16.5	33.5	18.5
25x25	R1	Rp1	43.5	19	40.5	22
32x32	R1 1/4	Rp1 1/4	49	21.5	47.5	24.5
40x40	R1 1/2	Rp1 1/2	54	21.5	51	24.5
50x50	R2	Rp2	64	26	61	28.5

HS330-008 BRASS TEE



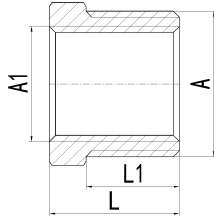
SIZE	A	L	L1	H	H1
8x8x8	Rp1/4	21	13	21	13
10x10x10	Rp3/8	23.5	13.5	23.5	13.5
15x15x15	Rp1/2	30	17.5	30	17.5
20x20x20	Rp3/4	33.5	18.5	33.5	18.5
25x25x25	Rp1	40.5	22	40.5	22
32x32x32	Rp1 1/4	47.5	24.5	47.5	24.5
40x40x40	Rp1 1/2	51	24.5	51	24.5
50x50x50	Rp2	61	28.5	61	28.5

HS330-009 BRASS ALL THREAD NIPPLE



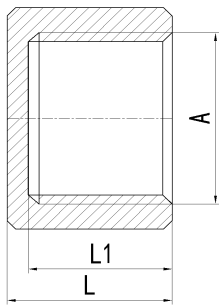
SIZE	A	L
15x150mm	G1/2	150
20x150mm	G3/4	150
25x150mm	G1	150
32x150mm	G1 1/4	150
50x300mm	G2	300

HS330-010 BRASS REDUCING BUSH



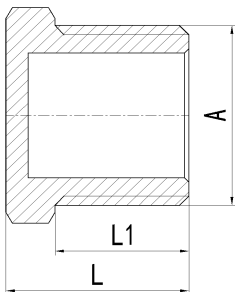
SIZE	A	A1	L	L1
10x8	R3/8	Rp1/4	17	11.5
15x10	R1/2	Rp3/8	20.5	15
20x8	R3/4	Rp1/4	23	16.5
20x15	R3/4	Rp1/2	23	16.5
25x20	R1	Rp3/4	25.5	19
32x25	R1 1/4	Rp1	30	21.5
40x15	R1 1/2	Rp1/2	31	21.5
40x32	R1 1/2	Rp1 1/4	31	21.5
50x20	R2	Rp3/4	35.5	26
50x40	R2	Rp1 1/2	35.5	26

HS330-011 BRASS CAP



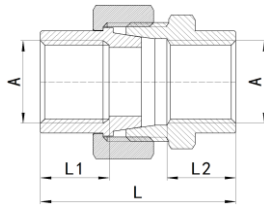
SIZE	A	L	L1
8	Rp1/4	15	13
10	Rp3/8	15.5	13.5
15	Rp1/2	19.5	17
20	Rp3/4	21	18.5
25	Rp1	24	21
32	Rp1 1/4	27	24
40	Rp1 1/2	27.5	24
50	Rp2	31.5	28

HS330-012 BRASS PLUG HEX SQUARE



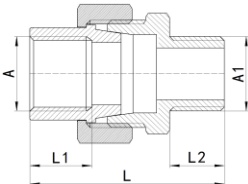
SIZE	A	L	L1
6	R1/8	12	7.5
8	R1/4	15.5	11
10	R3/8	17	11.5
15	R1/2	20.5	15
20	R3/4	23	16.5
25	R1	25.5	19
32	R1 1/4	30	21.5
40	R1 1/2	31	21.5
50	R2	35.5	26

HS330-013 BRASS BARREL UNION F&F



SIZE	A	L	L1	L2
15x15	Rp1/2	48.5	17	17
20x20	Rp3/4	52.5	18.5	18.5
25x25	Rp1	58	21	21
32x32	Rp1 1/4	69.5	24	24
40x40	Rp1 1/2	69.5	24	24
50x50	Rp2	78.5	28	28

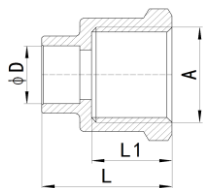
HS330-014 BRASS BARREL UNION M&F



SIZE	A	A1	L	L1	L2
15x15	Rp1/2	R1/2	53.5	17	15
20x20	Rp3/4	R3/4	61	18.5	16.5
25x25	Rp1	R1	68.5	21	19
32x32	Rp1 1/4	R1 1/4	78	24	21.5
40x40	Rp1 1/2	R1 1/2	78	24	21.5
50x50	Rp2	R2	88.5	28	26

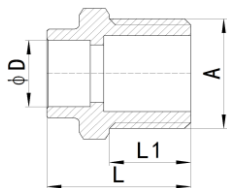
HS340 Brass Capillary Solder Fitting

HS340-001 END-FEED CONNECTOR FEMALE



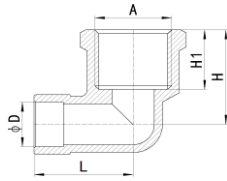
SIZE	D	A	L	L1
15Cx15FI	12.7	Rp1/2	27.5	17
20Cx20FI	19.1	Rp3/4	29	18.5

HS340-002 END-FEED CONNECTOR MALE



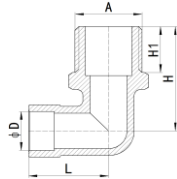
SIZE	D	A	L	L1
15Cx15MI	12.7	R1/2	26.5	15
20Cx20MI	19.1	R3/4	29	16.5

HS340-003 END-FEED ELBOW FEMALE



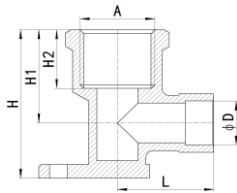
SIZE	D	A	L	H	H1
15Cx15FI	12.7	Rp1/2	27	27	17
20Cx20FI	19.1	Rp3/4	29.5	31	18.5

HS340-004 END-FEED ELBOW MALE



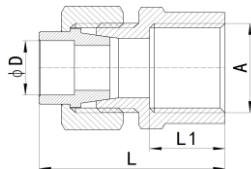
SIZE	D	A	L	H	H1
15Cx15MI	12.7	R1/2	25	34	15
20Cx20MI	19.1	R3/4	28	38.5	16.5

HS340-005 END-FEED WALL-PLATE ELBOW



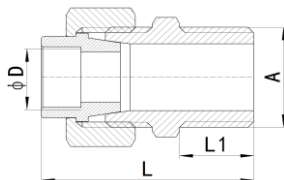
SIZE	D	A	L	H	H1	H2
15Cx15FI	12.7	Rp1/2	27	43	27	17
20Cx20FI	19.1	Rp3/4	29.5	50	31	18.5

HS340-006 END-FEED STRAIGHT UNION CONNECTOR FEMALE



SIZE	D	A	L	L1
15Cx15FI	12.7	Rp1/2	42	17
20Cx20FI	19.1	Rp3/4	45.5	18.5
25Cx25FI	25.4	Rp1	54	21

HS340-007 END-FEED STRAIGHT UNION CONNECTOR MALE



SIZE	D	A	L	L1
15Cx15MI	12.7	R1/2	43	15
20Cx20MI	19.1	R3/4	47.5	16.5
25Cx25MI	25.4	R1	57	19