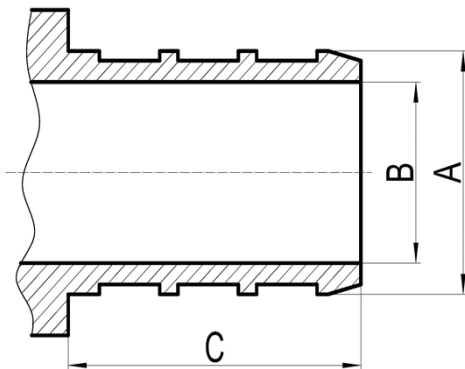


HS240 Brass Pex Insert Fitting for USA

Features

- Conform to F1807
- Fittings with soldering or brazing end conform to ASME B16.22
- NPT male thread, NPSM female thread
- Thread conform to ANSI/ASME B1.20.1
- C46500 brass
- Fast and easy installation.

Suitable PEX Pipe (SDR9)



Insert for Fitting Size

Size	Nominal Dimension and Tolerance				
	A (mm)		B (mm)		C (mm)
3/8"	Φ8.76	±0.1	5.85	+0.1	MIN16.0
1/2"	Φ11.96	±0.1	8.89	+0.1	MIN16.0
5/8"	Φ14.48	±0.1	11.46	+0.1	MIN16.0
3/4"	Φ16.94	±0.1	13.47	+0.1	MIN16.0
1"	Φ21.74	±0.1	18.04	+0.1	MIN20.5
1 1/4"	Φ26.54	±0.1	22.1	+0.1	MIN24.0
1 1/2"	Φ31.32	±0.15	25.91	+0.15	MIN29.0
2"	Φ40.69	±0.15	34.68	+0.15	MIN38.0